

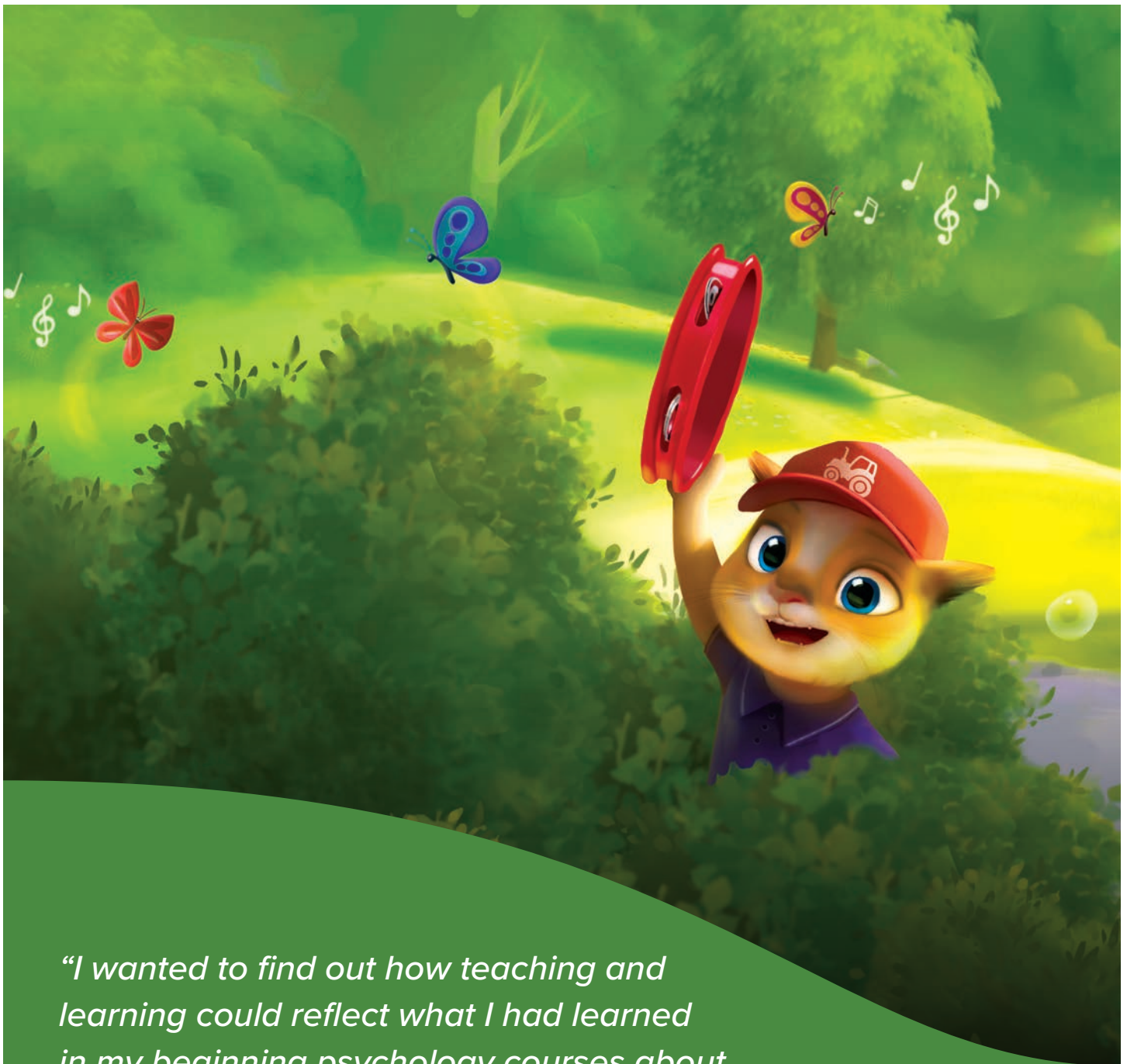
The background is a dark blue night sky with yellow stars and a large yellow crescent moon. In the bottom left, there is a dark green bush. A cartoon penguin wearing a yellow hat, sunglasses, and a blue scarf is flying out of the bush. In the bottom right, a small blue rocket is flying upwards, leaving a white trail. The Mc Graw Hill logo is in the top left corner.

**Mc  
Graw  
Hill**

# **A Proven K–8 Online Leveled Reading Program**

Instilling Confidence in Learners for More Than 60 Years.

**SRA**  
**Reading**  
**LABORATORY®**  
**GLOBAL**



*“I wanted to find out how teaching and learning could reflect what I had learned in my beginning psychology courses about the normal curve of individual differences. I wanted, somehow, to individualize instruction. But how? One teacher for every child? Tell that to the taxpayers! No, it had to be done with one teacher and thirty or forty kids. And I kept asking myself—how?”*

**— Don H. Parker, Ph.D.,**  
Original author of *SRA Reading Laboratory*®

# Proven K–8 Leveled Reading Program

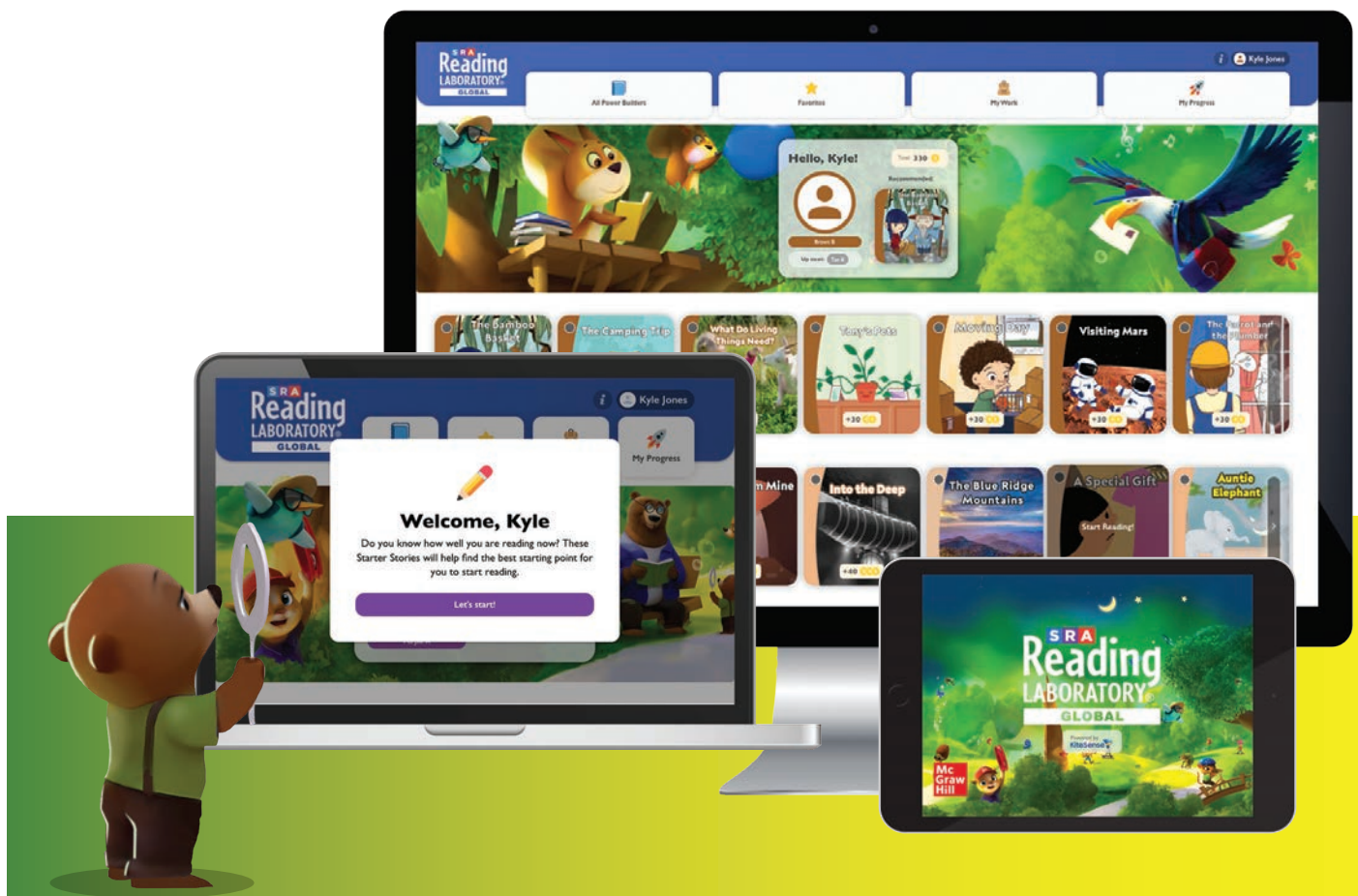
As one of the earliest personalized learning programs, *SRA Reading Laboratory* has improved the reading and independent learning skills of more than 100 million students in 63 countries, becoming one of the most trusted names in literacy learning.

*SRA Reading Laboratory* lets you develop confident readers through supplemental and personalized K–8 reading content that ensures each student is working at the appropriate level and moving ahead at his or her own pace. The program provides many benefits, including:

- Proven pedagogy supported by more than 60 years of reading success.
- Flexible, personalized learning to help you effectively manage an entire classroom of various reading levels.
- Development of confident, independent readers.

## Teacher-Inspired

In 1959, Don H. Parker, Ph.D. launched *SRA Reading Laboratory* while teaching in a rural Florida classroom. Faced with the challenge of reaching different levels of learners, Dr. Parker devised a method of breaking reading selections into color-coded levels. Students began reading at an appropriate reading level and worked upward through increasingly challenging content. Enhanced by modern technology, *SRA Reading Laboratory Online (Global Edition)* adapts this beloved program for 21<sup>st</sup> century students.





Students gradually build their skills and confidence while reading quality selections and learning about fun, interesting topics!



## Fits Any Instructional Setting

\*requires devices with Internet connection (e.g. desktop, laptop or tablet).



Classroom



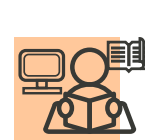
Tutoring  
Center



Before-School and  
After-School  
Programs



Enrichment  
Center



Resource  
Room



Summer  
School

# Color-Coded Student Motivation

The design of the program is simple: each student's skill level is matched to a color-coded, leveled reading selection. The reading levels gradually increase in complexity, and selections gradually increase in word count to keep students challenged as they progress through the program.

1

## **Know Your Color:**

Students place into the appropriate color level with aligned Lexile® range after completing no more than 3 Starter Stories upon first login.

2

## **Read Independently:**

Students are recommended a **Power Builder** within their color level directly on their dashboard. Each Power Builder consists of an interactive reading experience followed by fun questions focusing on comprehension, word analysis, vocabulary, and grammar.

3

## **Check and Revisit:**

After students complete a Power Builder, they will review their performance and get a choice of trying the next Power Builder or trying a Read Aloud practice. Based on the results, students might also see a suggested **Skill Builder** providing reinforcement and extra practice on specific skills which students struggled with during the Power Builder.

4

## **Progress Monitoring:**

As students progress through the different Power Builders within their color level, all their activity is tracked in the My Progress tab so they can monitor their own progress over time.

5

## **Automatic Level-Up:**

Once they have made significant progress within their color level, they are automatically promoted to the next color level. If students are showing signs of frustration, they will be automatically adjusted to a lower color level.



# Learn to Read *and* Read to Learn

Power Builders are the heart of the program and contain a wide variety of engaging and approachable readings for students to enjoy as they progress from level to level. The imagery within the program is balanced between illustrations and photos.

Power Builders include exciting content that is split 50/50 between both fiction and nonfiction topics to create strong cross-curricular connections while providing students with engaging materials that help them learn to read.



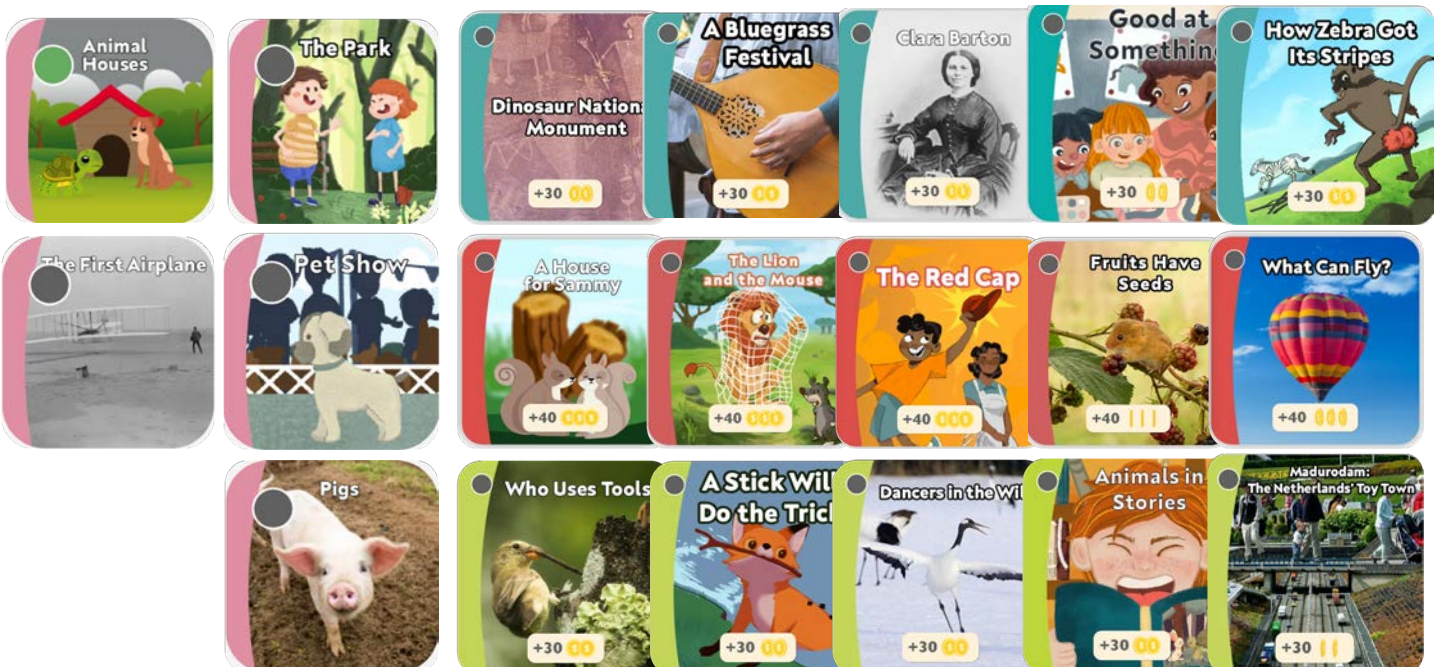
Nonfiction includes:

- Science
- Social Studies
- Sports
- Technology

Fiction includes:

- Classic Folktales
- Literature
- Fantasy
- Science Fiction

Examples of Power Builders





## Supporting a Growth Mindset Within Every Student

### Students Stay Invested to Build Independence

Avoid learner frustration with real-time monitoring and automatic leveling. The program keeps pace with student's learning by adjusting the color level of the Power Builders recommended so students can progress independently. Data is readily available for students so they can directly relate effort to results. This builds investment in their own outcomes and encourages independence.

Students and teachers can review progress data together and conference about whether they are at the appropriate level. If needed, teachers can then manually place the student on a different color. As students begin to directly relate effort to results, they become invested in their outcomes and truly own their learning path.

### Students Build Confidence in Their Ability to Learn

Due to the leveled nature of the program, students are set up for success through accessible content with the appropriate amount of challenge to stretch their learning forward. As students progress through the program, their confidence in their ability to learn through reading continually strengthens and grows.

### Students Enjoy and Engage With Their Learning

Because each level incorporates a variety of cross-curricular topics, ranging from nonfiction to fiction, students explore topics that interest them, opening the door to reading as a tool to learn about and engage with their interests in and out of the classroom!



# SRA Reading Laboratory Online Features

## Teacher's Dashboard

The Teacher's Dashboard provides an intuitive overview of how students are doing in the *SRA Reading Laboratory Online* program. The teachers can access both Class level and student level detailed information and progress for easy monitoring in real time!

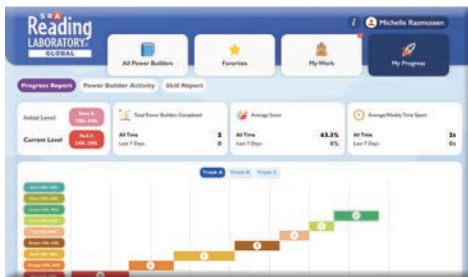
Additional resources on prerequisite skills and the full titles and topics of Power Builders are also found in the Teachers Dashboard.



## Student Progress via “My Progress”

The My Progress tab for students help learners independently chart their progress in an organized manner. Learners use the My Progress tab to get a sense of their progress both in terms of color levels and their reading skills - thus promoting student accountability and ownership.

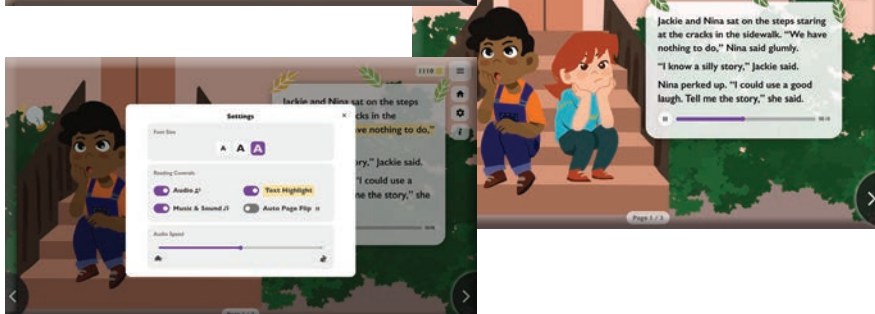
The colorful progress charts are updated in real time, giving students an immediate connection between their efforts and reading progress.



## Power Builders Reading Experience

Power Builders are the heart of the program. Each *SRA Reading Laboratory* Power Builders — is arranged in color-coded levels that keep students challenged as they progress through the program.

Now enhanced with animated graphics, optional audio narration and even a translation function coming soon, Power Builders are sure to keep students engaged and interested.

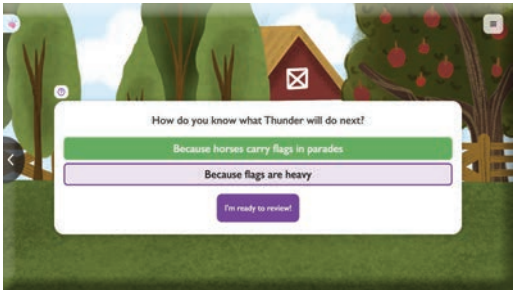




# Power Builders Reading Activities

Each Power Builder Reading Activity comes with three parts:


- A Comprehension section that poses multi-leveled questions about the reading selection.
- A Learn About Words section that includes vocabulary and word-study exercises.
- A Focus on Skills section that includes questions to help students build reading skills.



## Skill Builders

Skill Builders reinforce in basic comprehension, phonics, grammar, and word study skills. Students are directed to the Skill Builders to strengthen particular skills based on their answers to the Power Builders. This way, students get the specific reinforcement they need automatically.

## SRA Reading Laboratory Online in Summary

	Tracks A, B, C (©2020)	Tracks D & E (©2020)
Power Builders	 (Qty. 432)	 (Qty. 288)
Skill Builders	 (Qty. 762)	 (Qty. 486)
Rate Builders		 (Qty. 288)

# Choose Your *SRA Reading Laboratory* to Fit Your Needs

Colors	Lexile Measure	A	B	C	D	E
Purple	N/A	●				
Violet	N/A	●				
Rose	190L–240L	●				
Red	240L–290L	●	●			
Orange	290L–340L	●	●	●		
Gold	340L–390L	●	●	●		
Brown	390L–440L	●	●	●	●	
Tan	440L–490L	●	●	●	●	
Lime	490L–540L	●	●	●	●	●
Green	540L–590L	●	●	●	●	●
Olive	590L–640L	●	●	●	●	●
Aqua	640L–690L	●	●	●	●	●
Blue	690L–740L		●	●	●	●
Purple	740L–790L*		●	●	●	●
Violet	790L–840L*		●	●	●	●
Rose	840L–890L*			●	●	●
Red	890L–940L*				●	●
Orange	940L–1020L*				●	●
Gold	1020L–1100L*					●
Brown	1100L–1150L*					●







Creating confident, lifelong readers for more than 60 years, *SRA Reading Laboratory Online* — now as an online supplemental K–8 leveled reading program — motivates every student through self-guided, cross-curricular selections that connect their efforts to success.



For more information and how to order, please visit

<https://bit.ly/RLOMEA24>